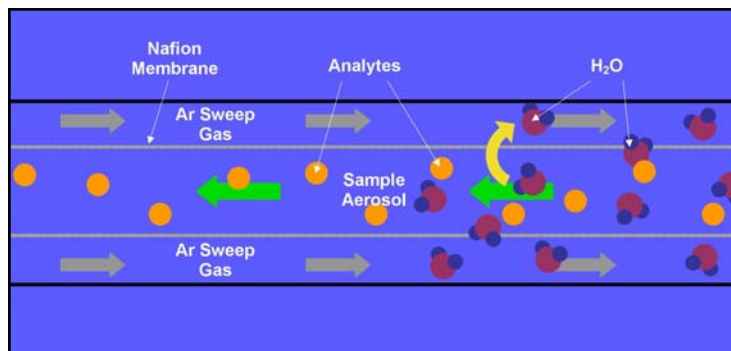


# ACM module

## Actively Cooled Membrane Desolvation for Apex Inlet System

- ▲ Microporous Nafion® fluoropolymer
  - Removes water without loss of analytes
  - Chemical resistance similar to Teflon®
- ▲ Improved Desolvation Efficiency
- ▲ Attaches directly to any Apex
- ▲ Reduces oxides and other interferences
- ▲ Reduces Cerium Oxide / Cerium Ratio <math>< 0.05\%</math>



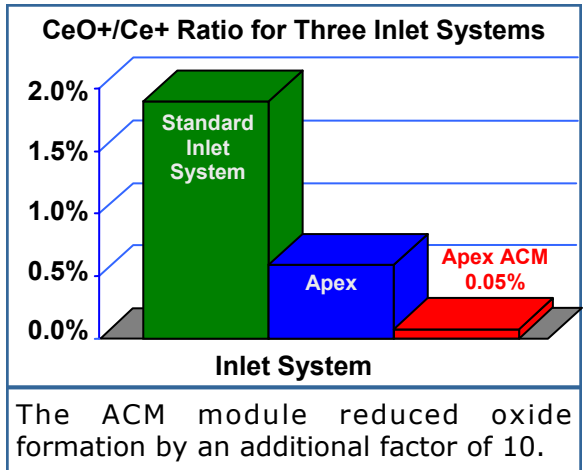
Nafion and Teflon are registered trademarks of DuPont.

Elemental Scientific Inc.  
2440 Cuming St  
Omaha, NE 68131 USA  
[www.elementalscientific.com](http://www.elementalscientific.com)

Phone: 402.991.7800  
Fax: 402.991.7799  
Email: [esi@icpms.com](mailto:esi@icpms.com)

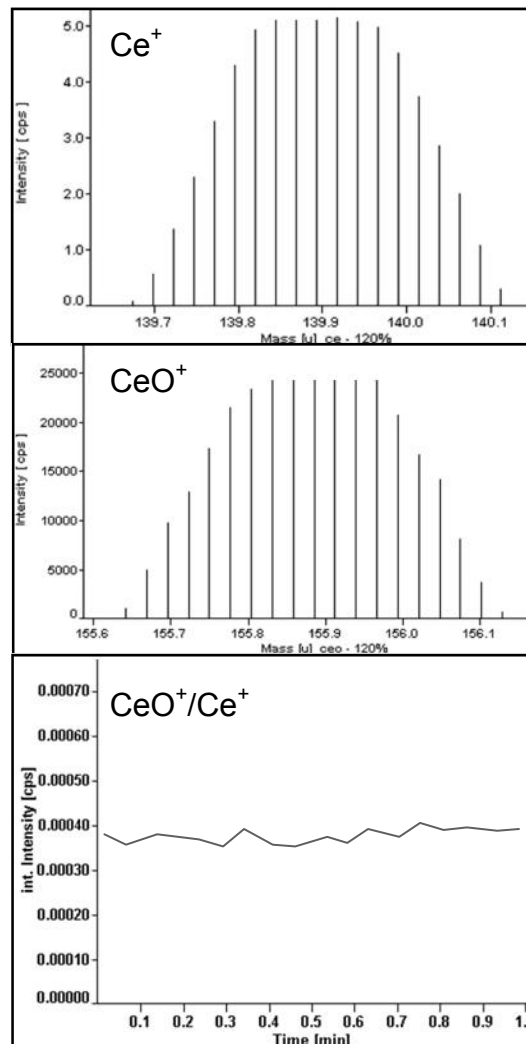
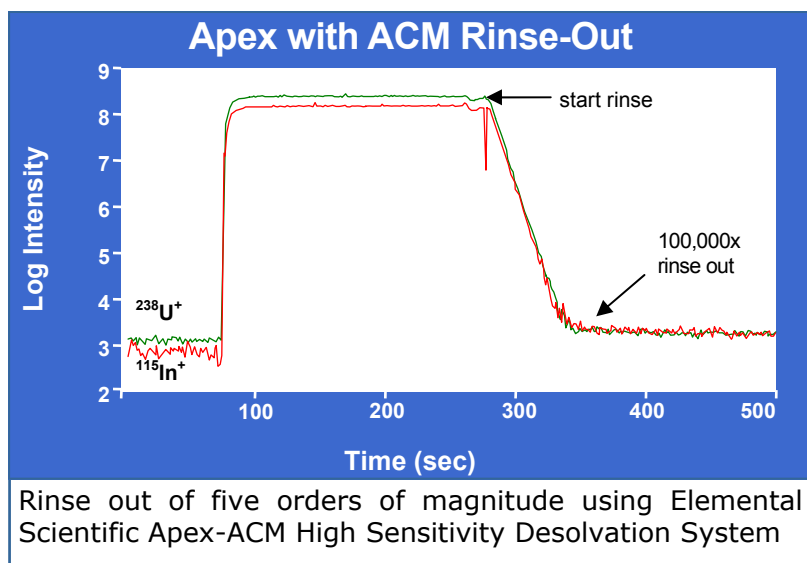


ACM Peltier cooled Nafion® membrane desolvation module for Apex inlet system



# Apex and ACM aerosol desolvation system for ICP systems

- ▲ Apex can be used with or without the ACM Nafion<sup>®</sup> membrane.
- ▲ Microporous Nafion<sup>®</sup> membrane
  - Easier to optimize than macroporous membranes
  - Sweep gas does not enter sample aerosol stream
  - Resistant to clogging by organic compounds or salts
- ▲ Fast rinse-out



Reduced oxide formation using ACM Microporous Membrane Desolvator with Finnigan Element 2 ICPMS. Membrane temperature = -5°C