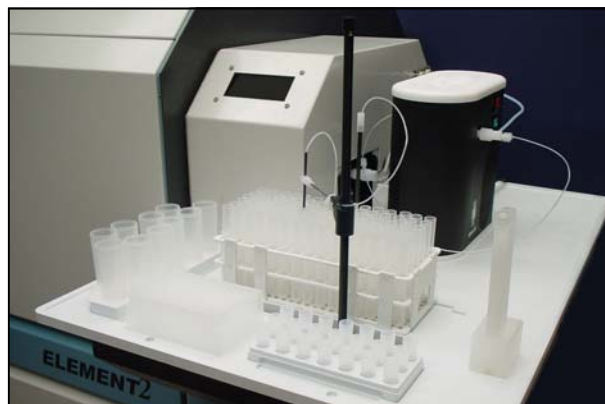


SC-E2 Autosampler

Integrated Autosampler for the
ELEMENT2 ICPMS

The SC-E2 is the world's first autosampler integrated to an ICPMS instrument, specifically designed for the Thermo Element2. Improving the throughput and



SC-E2 Autosampler with Apex high-sensitivity sample introduction system.

Convenient

- Replace the small Element2 tray with a combination autosampler and larger sample tray.
- Analyze both small and large volume samples—from <1 mL to 250 mL within a single run
- Gain additional space for alternate introduction systems and samples.
- Fully Operable in the Element2 software in emulation of the ASX-500 autosampler.
- Perform ICPMS cone maintenance without disconnecting or moving the sampling system.
- Optional integrated clean enclosure available for contamination control.
- Switch closure and TTL I/O signals for timing of data acquisition and peripheral devices.

Clean

- Unique x-y motion eliminates mechanical components moving over sample vials.
- Probe retraction speed control to reduce or eliminate hanging droplets.
- Rigid Teflon-encapsulated carbon-fiber reinforced probe with inert sample flow path.
- Probe depth may be specified for each sample rack.
- Probe guide eliminated.
- Dual flowing rinse stations reduces blanks and cross contamination.
- Pressure-driven or pump-driven rinse solutions.
- Two different rinse solutions may be utilized, mimicking best manual practice.

Elemental Scientific Inc.
2440 Cuming St.
Omaha, NE 68131 USA
www.elementalscientific.com

Phone: 402.991.7800
Fax: 402.991.7799
Email: esi@icpms.com

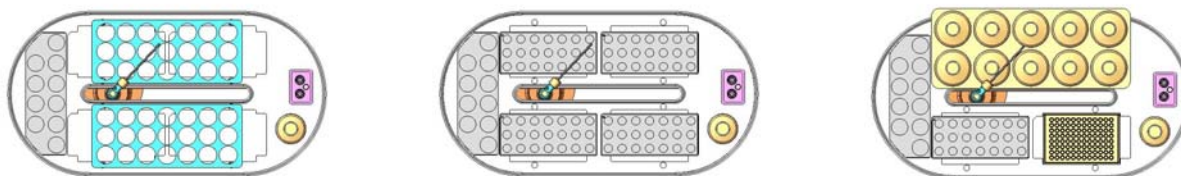


Specifications:

Communications:	RS-232
Power Requirements:	24 V DC (switching power supply) Input 100-240 V AC \pm 10%, 50-60 Hz
Dimensions:	"L"-shaped. Length: 79cm Width: 53cm
Standards Positions:	10
Rinse Positions:	2

Multiple Rack Configurations: The SC-E2 may be configured with a variety of sample racks accommodating up to 384 samples. Combinations of two standard-sized racks (21 to 90 positions), four small racks (21 to 60 positions) or four 96 well micro titer plates are possible. Super-racks with higher capacity and custom racks may be used.

Examples of Possible Rack Configurations:



Options:

Dual Rinse Station :

- Peristaltic pump driven rinse solution under the SC-E2 control.
- Pump-free rinse system, giving the lowest possible rinse contamination.
- PFA rinse station for low backgrounds

Rack Type:

- Industry Standard Racks
- ESI Standard Racks
- ESI Small Racks
- Micro Titer Plates
- Super Trays and Custom Racks

SC-FAST Rapid Analysis System

- Increase sample throughput 2—3 fold

Clean Enclosure

P/N ES-8199-1307

SC-E2 Autosampler
P/N ES-8103-52



SC-E2 autosampler with clean enclosure attached

Elemental Scientific Inc.
2440 Cuming St.
Omaha, NE 68131 USA
www.elementalscientific.com

Phone: 402.991.7800
Fax: 402.991.7799
Email: esi@icpms.com